

Echoview 15.1 release notes



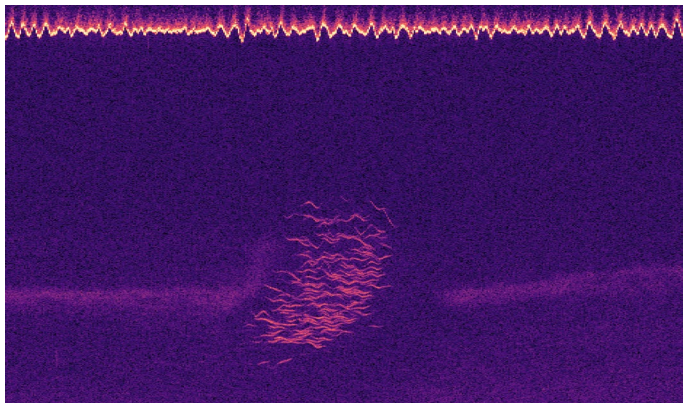
Echoview Software is committed to increasing your hydroacoustic data processing capabilities by providing best practice, easy-to-use software.

Echoview 15.1 is a free upgrade for anyone with licensed access to Echoview 15 and brings a helpful selection of user-requested features that are detailed below.

Please contact info@echoview.com to discuss your options for accessing Echoview 15.1.

Sonardyne Origin ADCP: echosounder mode support

Echoview 15.1 introduces support for echosounder data recorded to *.bgram files by Origin 600 and Origin 65 acoustic Doppler current profilers (ADCPs). Echoview reads received power data along with heading, pitch, and roll measurements. Unspecified dB values are calculated from the received power data for all 4 or 5 beams in the Origin 65 and Origin 600 units, respectively.



Sonardyne Origin 600 echosounder data showing a school of targets interacting with a scattering layer located approximately 20 m below the water surface. Data credit: Benjamin Williamson and Beth Scott for the ECOWind PELAGIO project.

Origin echosounder data is also supported by Echoexplore, our hydroacoustic data file spatial catalog, and Echocheck, which checks the contents and quality of echosounder and sonar data files.

Other features

- The valid range of pitch and roll values in Blueprint Subsea Oculus data is expanded from -90 to 90 degrees to -180 to 180 degrees.
- More data is read from partially corrupted Navico Group Lowrance sonar log data files.

- New analysis variables, Target_elongation and Target_elongation_across_beams, provide additional metrics for multibeam target analysis and classification.
- File locations for Python files (used by the Code operator) can be managed using EV File page in the EV File Properties dialog box, improving access across different machines and configurations.
- Echoview uses the user-defined frequency for Simrad EK80 narrowband data collected at a frequency other than the nominal frequency.
- Echograms exported to multiple (split) images follow a consistent naming pattern.
- The Line and Surface and Region classification tools found in the echogram toolbar dynamically resize to accommodate longer names, improving visibility and usability when working with lines and regions.
- The maximum tab width in docked panels is increased to 350 pixels, ensuring that longer operator and raw variable names are more readable without being clipped.
- Echoview's help file content is improved, with additions including:
 - Updated FCV-38 equations
 - Updated unit descriptions for bottom classification equations
 - EvRegionClass listing of the method EvFile.RegionClasses.CreateTransectGroup, which converts all 2D regions in a region class to a transect group.

System requirements

Echoview 15.1 is compatible with 64-bit Windows 10 and 11 operating systems.

Getting Echoview 15.1

You can download Echoview 15.1 from our [website](https://www.echoview.com) or use the in-software Help menu option to Check for Updates.

A complete list of features and fixes are listed on the "New in Echoview 15" pages in the help file installed alongside Echoview 15.1.

Please contact support@echoview.com for further information.