

Echoview 12.1

release notes



Echoview Software is committed to improving your hydroacoustic data processing capabilities by providing best practice, easy-to-use software.

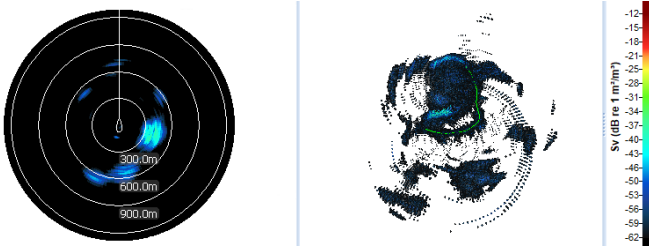
Echoview 12.1 is a free upgrade for anyone with licensed access to Echoview 12, and brings a neat selection of user-requested features as detailed below, as well as stability and performance enhancements.

Please contact info@echoview.com to find out if your license has access to Echoview 12 and 12.1.

Support for new hardware

Echoview 12.1 includes support for data file formats recorded by the following echosounders and sonars:

- Furuno FSV-30R omnidirectional scanning sonar data, recorded to *.fsv format
- Furuno FSV-25 omnidirectional scanning sonar data, recorded to the ICES SONAR-netCDF4 *.nc format
- Teledyne BlueView *.son files recorded using ProViewer versions 4.5 and 4.6



Echogram and 4D view of Furuno FSV-25 omnisonar data, recorded from the Norwegian fishing vessel "CHRISTINA E" at a herring fishing ground.

Windows 11 compatibility

Echoview 12.1 is compatible with the latest Microsoft operating system. Future updates will improve user interface elements in Echoview for this operating system.

Calibration improvements

- The generic calibration settings that are used to adjust samples by fixed values (CalibrationOffsetSv and CalibrationOffsetTs) now span a wider dB range. Echoview 12.1 allows values between -999 to 999 dB (older versions are limited to -99 to 99 dB)
- Echoview's Calibration Assistant can now be resized to a smaller vertical height, making it easier to use on small screens such as laptops

Additional MATLAB exports

Echoview provides the ability to export echogram data to MATLAB *.mat files, allowing you to manipulate data using Echoview's built-in tools, and then easily continue your analysis in MATLAB.

In Echoview 12.1, data for even more data types can be exported to MATLAB files: Power, TS, and unspecified dB data for narrowband, complex, pulse compressed complex and multibeam variables; expanding to the existing list of exportable data types that encompassed Sv, angular position and magnitude.

Workspaces for templates

Workspaces allow you to save a preferred arrangement of windows in an EV file. In Echoview 12.1, workspaces have been extended to templates so that:

- When a template is saved using the File menu option to Save Template, the workspace is also captured
- When a new file is created using a template, that template's workspace will be applied if present

More detail in the Details panel

The Details panel, which can be toggled via a toolbar button or using the F9 shortcut key, now displays more information for Simrad EK80 (transceiver and transducer names, and serial numbers for both), and Nortek Signature (system name, serial number, and firmware version) systems.

New shortcuts

- Press Shift+J to define a region of type Bad data (empty water) from a selection
- Press Ctrl+Shift+P to pre-calculate sample data in the 4D window
- An Edit button has been added to the 3D Regions page of the Detect 3D Schools dialog box. This allows you to easily create or edit region classes on the Classes page of the EV File Properties dialog box

To install Echoview 12.1, start Echoview and use the Help menu option to Check for Updates, or download the latest version of Echoview from our website.

Please contact support@echoview.com with any questions or to provide feature requests for future updates.