



Echoview Tutorial

Introduction to Fish Tracking

Contents

Overview	3
Prerequisites	3
Echoview modules.....	3
Contacting Echoview.....	3
Troubleshooting.....	3
Topic 1: Overview of Fish Tracking.....	4
About fish tracking	4
Single target echograms.....	4
Topic 2: Detecting Fish Tracks.....	5
Detecting fish tracks in a selection	5
Initiating fish track detection	5
Assigning a region class to the fish tracks	5
Choosing a detection algorithm and setting detection parameters	7
Topic 3: Editing Fish Tracks.....	10
Adding targets to a fish track	10
Merging fish tracks	11
Splitting fish tracks	12
Creating a fish track	12
Topic 4: Examining Fish Tracks	14
Examining fish tracks.....	14
Viewing 2D projections of fish tracks	14
Viewing fish tracks in the 3D Single Targets graph	15
Create and view 3D fish tracks in scenes.....	16
Topic 5: Analyzing Fish Tracks	17
An on-screen analysis of a fish track.....	17
Exporting fish track analysis results	17
Selecting the analysis variables to export.....	18
Selecting the fish tracks to analyze and exporting the analysis	19
<i>Tips</i>	19
Viewing exported fish track analyses	19

Overview

This tutorial is optimized for Echoview 11 and provides an introduction to fish tracking with Echoview.

This tutorial is not intended as a comprehensive user manual.

Further information on Echoview tools and topics can be found in the latest version of the Echoview help file. This can be viewed online and is installed with Echoview. Press F1 when using Echoview to open the help file and read context-sensitive information.

Throughout this tutorial further reading is referred to the Echoview help file or other Echoview learning materials: <https://www.echoview.com/technical-support>

Prerequisites

This tutorial assumes you have Echoview installed, and the following skills and knowledge:

- Familiarity with the basic operation of Echoview. We strongly recommend that you complete the "Getting Started with Echoview" tutorial before beginning this tutorial.
- Familiarity with a supported Microsoft Windows™ operating system. For more information refer to the Echoview Help file page: Computer requirements.
- A basic understanding of echosounding techniques and hydroacoustic surveying. For more information, see texts such as *Fisheries Acoustics* (Simmonds and MacLennan, 2008, Chapman and Hall, London).

Echoview modules

This tutorial requires a license with the Echoview Essentials and Fish Tracking modules. If you do not yet have access to an Echoview license with these modules, please contact sales@echoview.com to request an evaluation license.

Contacting Echoview

For assistance with this tutorial please contact support@echoview.com.

Troubleshooting

The files for a tutorial are typically located in C:\Echoview Software\Tutorials\. The file path may be different if you chose to install the tutorials elsewhere on your system. If the files are not in this folder, use Windows Explorer to search for them. If they are not loaded on your machine, download and reinstall the tutorial from www.echoview.com or from the Echoview USB drive.

If you receive a message saying that the version of Echoview you are running cannot read the file you have opened, you may be running an old version of Echoview. You can download the latest version of Echoview from www.echoview.com.

Topic 1: Overview of Fish Tracking

About fish tracking

Fish tracking aims to identify groups of single targets that show a pattern of systematic movement, indicating the track followed through the water by a single fish. A fish track, therefore, is a group of closely associated single targets (echoes) assumed to have been generated by one fish.

Fish tracks are detected in Echoview using a choice of 2D or 4D alpha-beta algorithms (range/time or range/time/minor beam angle/major beam angle). When fish tracks are detected, Echoview draws fish track regions around associated single targets. A count of fish track regions is effectively a count of individual fish.

Once fish tracks have been detected, they can be edited, viewed in 2D and 3D graphs, viewed in scenes, analyzed, and analysis results can be exported.

Single target echograms

Fish tracks can only be detected on echograms of single target variables. Single target variables may be logged directly by some echosounders, or can be created as virtual variables in Echoview using data from single beam, split beam, dual beam and wideband echosounders.

Targets and fish tracks can also be analyzed in data from multibeam echosounders, and this is dealt with in a separate tutorial called Introduction to Multibeam Target Data Processing.

You will now open an EV file that contains a single target variable.

1. Start Echoview and close any EV files that may have opened automatically.
2. Open the `FishTracking_AllTopics.EV` file. Echoview displays three echograms with the single target echogram as the active echogram. You can re-dock windows to match the workspace in Figure 1.

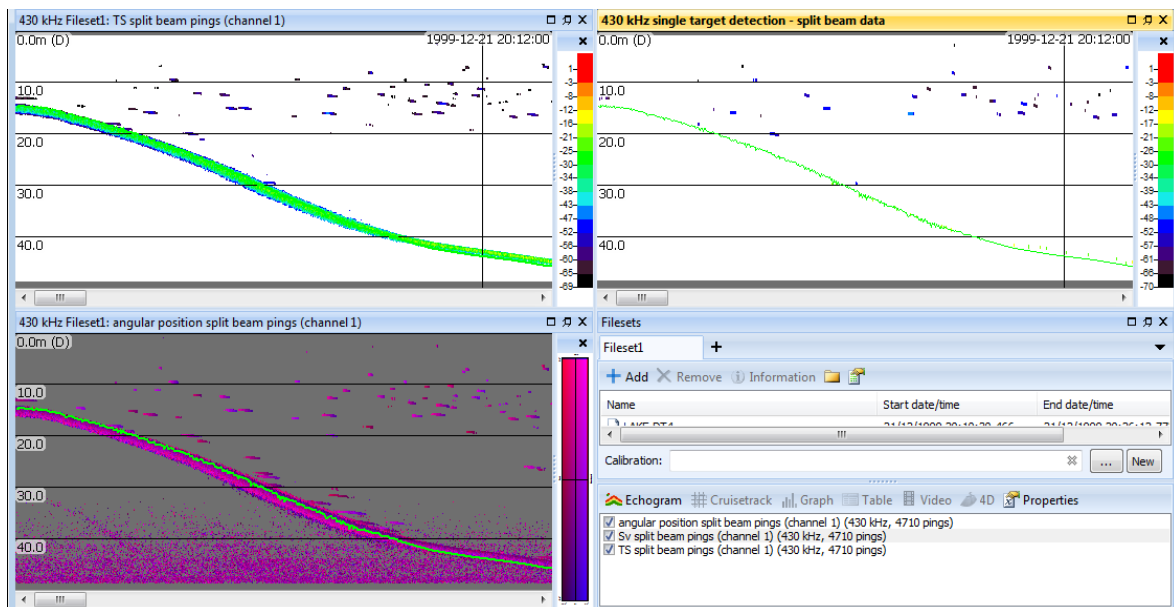


Figure 1. Echoview after opening the `FishTracking_AllTopics.EV` file.

Topic 2: Detecting Fish Tracks

In this topic you will learn how to detect fish tracks in Echoview.

Detecting fish tracks in a selection

You will now complete an exercise in which you detect fish tracks in a selection. You will complete the exercise in the following stages:

- initiating fish track detection
- assigning a "class" to the fish track regions that will be created, and
- tuning the fish track detection algorithm and setting fish track detection parameters.

Note: Detecting fish tracks for an entire echogram is very similar and is covered in the help file.

Initiating fish track detection

In this part of the exercise you will initiate the fish track detection process.

1. On the single target detection echogram, make a selection that is similar to the one shown below. We suggest you make a selection between 5 to 19 meters depth and 1999-12-21 20:11:45 to 1999-12-21 20:12:20 approximately. **Note:** Making selections and other basic navigation tasks are covered in the "Getting Started" tutorial.

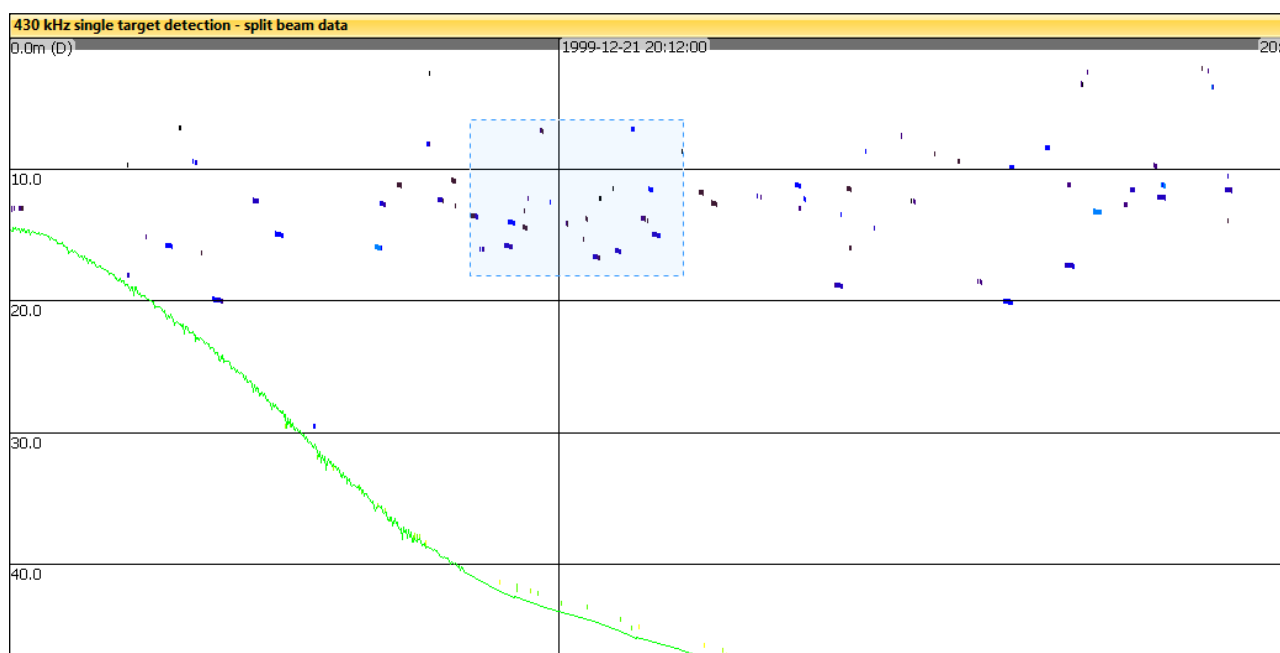


Figure 2. A selection around multiple single targets on a single target echogram.

2. On the **Shortcut** (right-click) menu, click **Detect Fish Tracks**. The Detect Fish Tracks (selection) dialog box is displayed.

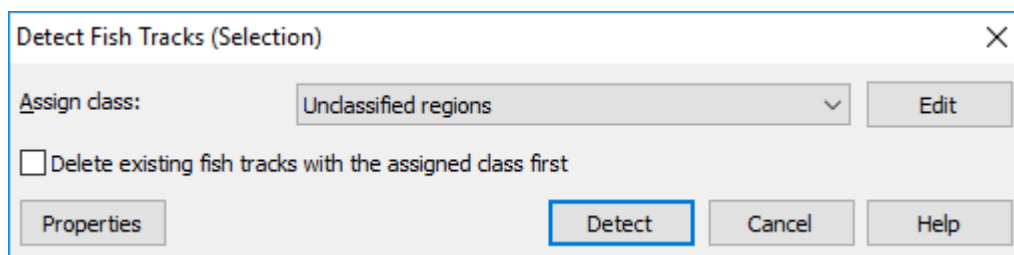


Figure 3. The Detect Fish Tracks (selection) dialog box.

Assigning a region class to the fish tracks

You can assign a region class to fish tracks so they can be differentiated from other fish tracks and other region types, e.g. you could assign classes based on the settings used to detect the fish tracks, the assumed species of the fish, or any other criterion.

3. Click on the **Assign class** list. No classes (other than the built-in Unclassified regions) have been defined. You will define a class in the next steps.
4. Click **Edit**. The Classes page of the EV File Properties dialog box is displayed.

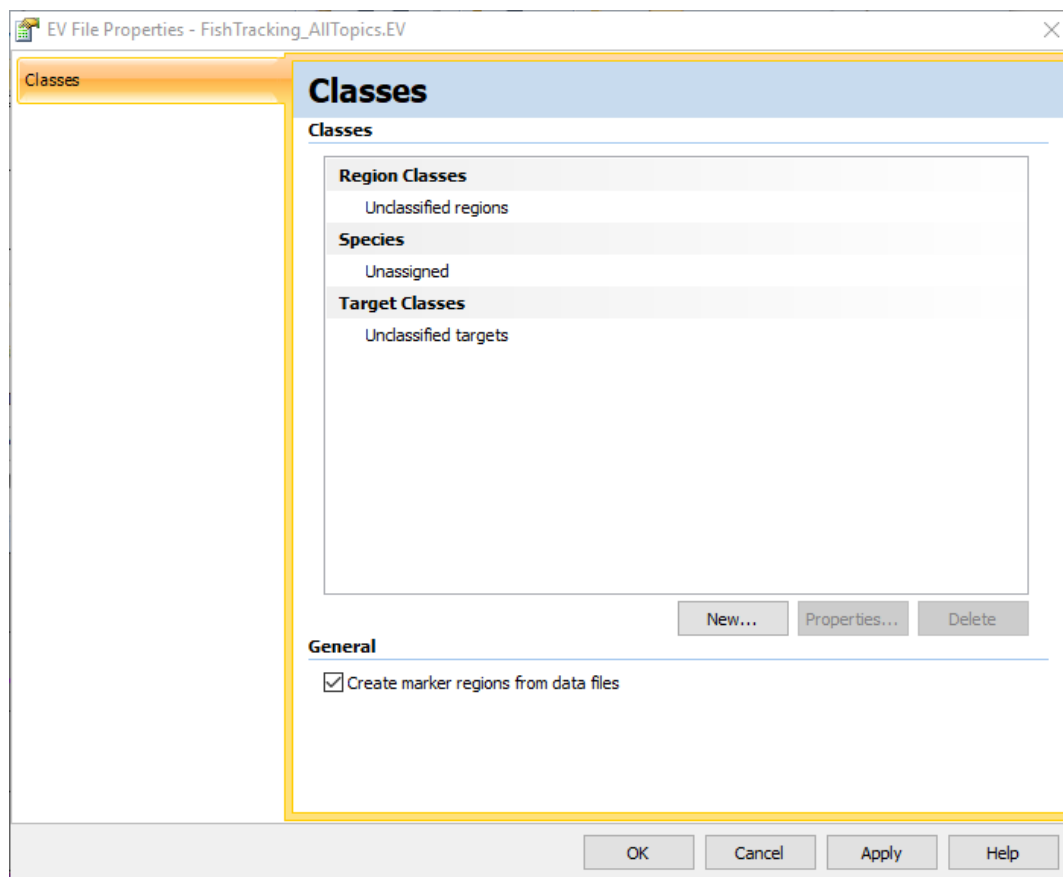


Figure 4. The Classes page of the EV File Properties dialog box.

5. In the **Region Classes** section, click **New**. The Region Class Properties dialog box is displayed.

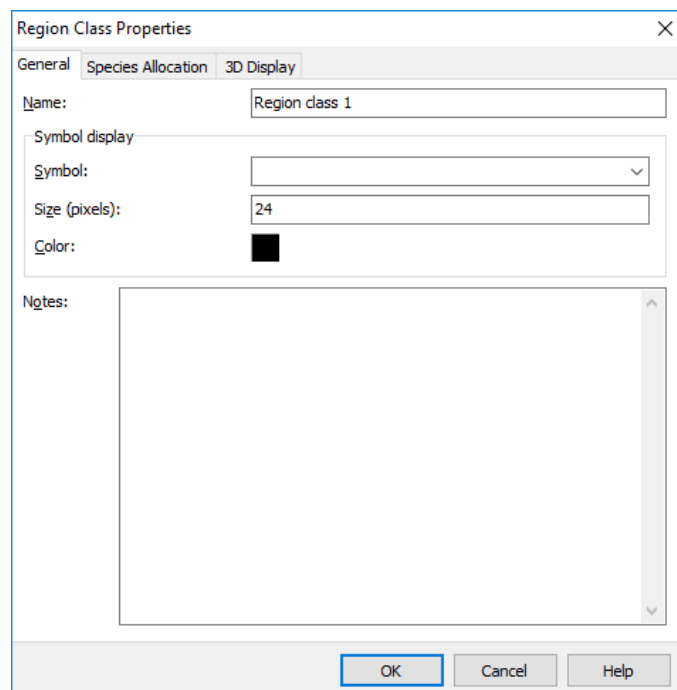


Figure 5. The Regions Class Properties dialog box.

6. In the **Name** box, type: Channel 1 tracks. A region class symbol type, size and color may also be specified in this dialog.
7. Click **OK**. **Channel 1 tracks** is now added to the **Region classes** list of the Classes page of the EV File Properties dialog box.
8. Click **OK**. The Detect Fish Tracks dialog box is active.
9. In the **Assign class** box, select **Channel 1 tracks**.

Choosing a detection algorithm and setting detection parameters

You control fish track detection in Echoview by tuning the fish track detection algorithm and setting fish track detection parameters.

10. On the Detect Fish Tracks dialog box, click **Properties**. The Track Detection Properties dialog box from the Fish Tracks page of the EV File Properties dialog box is displayed.
11. Click the Algorithms tab.

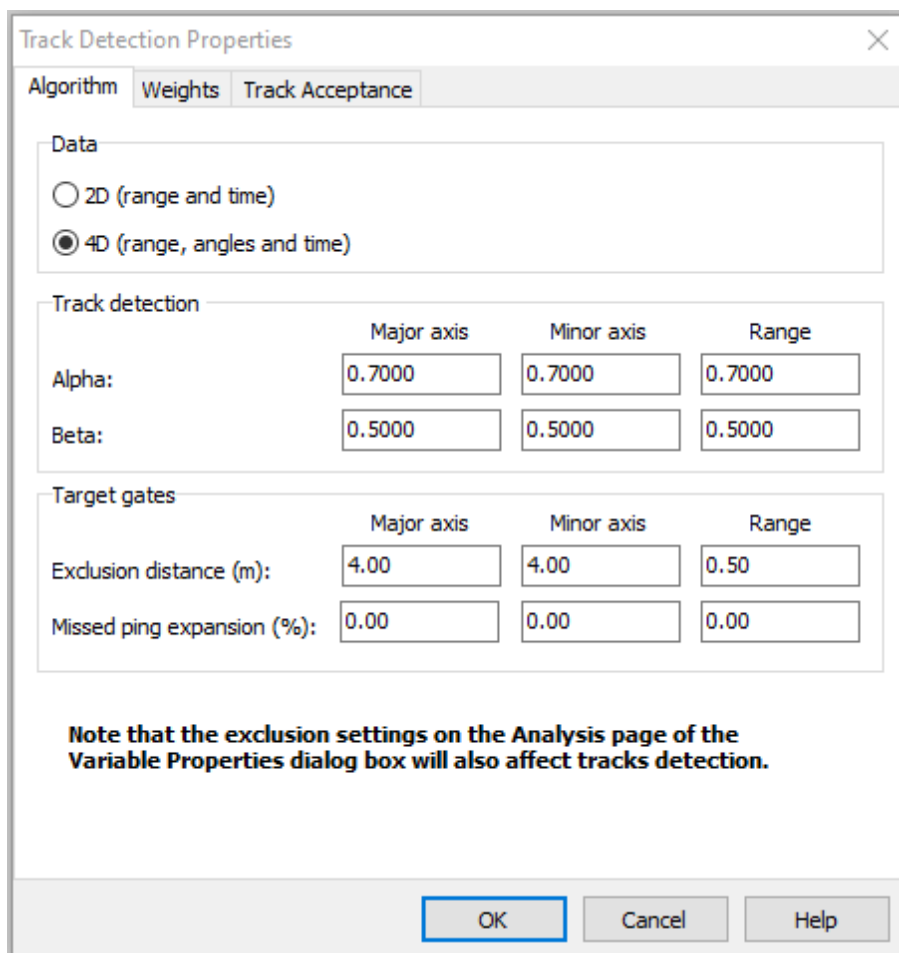


Figure 6. Algorithm page of the Track Detection Properties dialog box.

12. Choose the 4D (range, angles and time) option. For the purpose of this exercise, you do not need to change any of the other settings and will use the default algorithm settings.
13. Click the **Weights** page and take a moment to review the Weights settings.
14. Click the **Track acceptance** page and take a moment to review the Track acceptance settings. For a description of the settings on the pages, press F1 to display the Help file.
15. If it is open, close the help file and return to the Track Detection Properties dialog box.
16. Click **OK**. The Detect Fish Tracks (selection) dialog box is redisplayed.
17. Click **Detect**.

The detected fish tracks are displayed on the echogram as small colored regions and are labeled with the selected region class, i.e. Channel 1 tracks. Each fish track is displayed in one of eight different colors only to help distinguish them. You can turn off the display of region class labels in EV File Properties on the Echogram page.

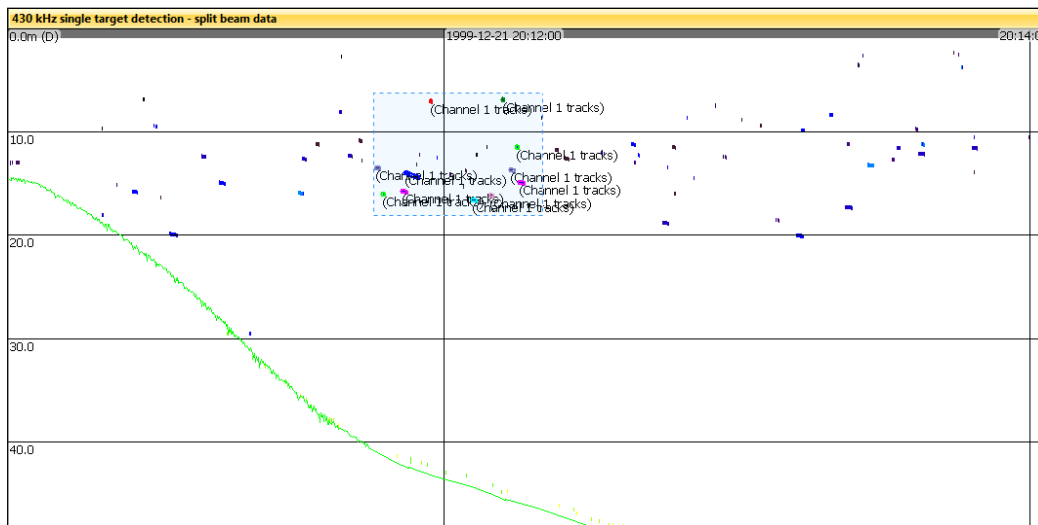


Figure 7. Echogram with fish tracks.

Topic 3: Editing Fish Tracks

In many circumstances, automated tracking algorithms may not include all single targets that belong to a track, or may falsely join tracks from different fish (this is most likely to occur when fish are dense in the water or the signal-to-noise ratio is low).

Echoview provides extensive tools for manually editing fish tracks and allows you to:

- manually create new fish tracks
- delete fish tracks
- add or remove targets from existing fish tracks
- merge fish tracks
- split fish tracks.

Adding targets to a fish track

In this exercise, you will add single targets to an existing fish track.

1. Using the Rectangle tool, make a selection of the fish tracks you created in the previous exercise.
2. Zoom in on the selection. Click on a fish track to select it. The region border around the fish track thickens and animates.
3. Make a selection around some single targets that are near the selected fish track. The single targets can be at any depth, but must not be on the same ping as a single target that is already part of the fish track.

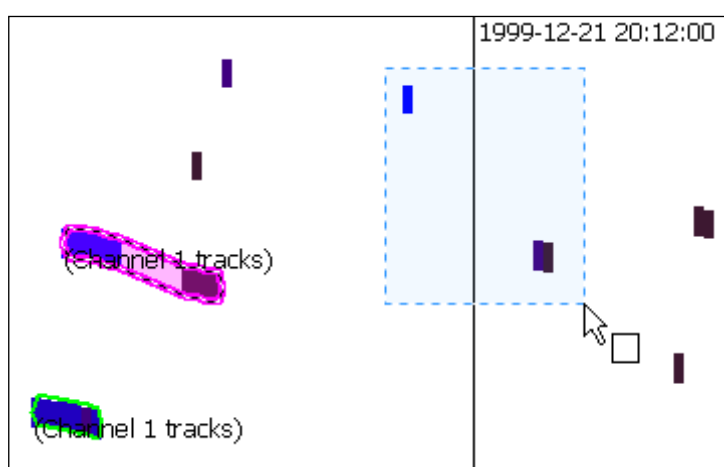


Figure 8. A selected fish track region and a selection around additional single targets.

4. On the **Shortcut** (right-click) menu, click **Add Targets To Fish Track**. The selected single targets are added to the fish track.

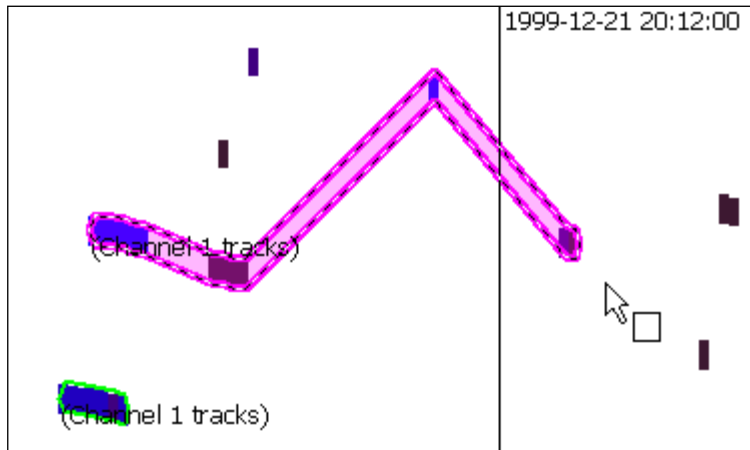


Figure 9. The fish track region after additional single targets are added.

For instructions on how to remove targets from a fish track, refer to the Echoview Help file Table of Contents: **How to > Detect and work with fish tracks > Editing fish tracks > Remove a target from a fish track**

Merging fish tracks

In this exercise you will merge two existing fish tracks.

5. Make a selection that includes at least two fish tracks. Do not select fish tracks that include single targets on the same ping (i.e. targets that are in the same vertical column on the screen).

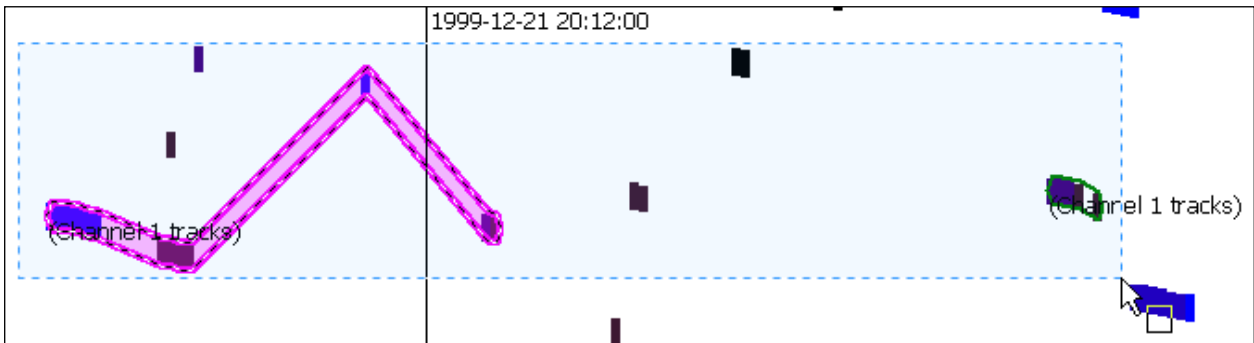


Figure 10. A selection around multiple fish tracks.

6. On the **Shortcut** (right-click) menu, click **Merge Fish Tracks** (or SHIFT+M). The selected fish tracks are merged to create a single fish track.

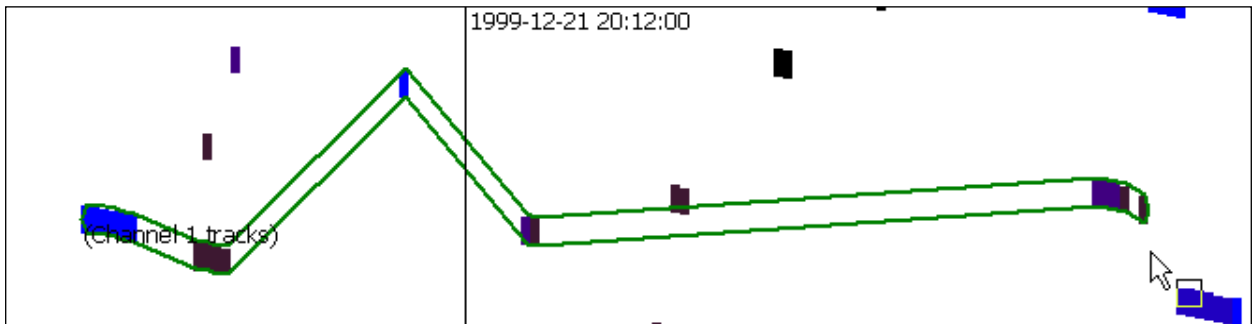


Figure 11. A merged fish track.

Splitting fish tracks

In this exercise you will split an existing fish track into multiple fish tracks.

7. Click on the fish track you merged in the previous exercise. The region border around the fish track thickens and becomes animated.
8. Move the mouse pointer over the point where you want to split the fish track. Targets to the left of the selected point you select will make one fish track, targets to the right of the selected point will make another.
9. On the **Shortcut** (right-click) menu, click **Split Fish Track**. The fish track is split into two fish tracks.

Creating a fish track

In this exercise you will manually create a fish track from a selection of single targets.

10. Click on the echogram away from any tracks to de-select the fish track.
11. Make a selection that includes one or more single targets.

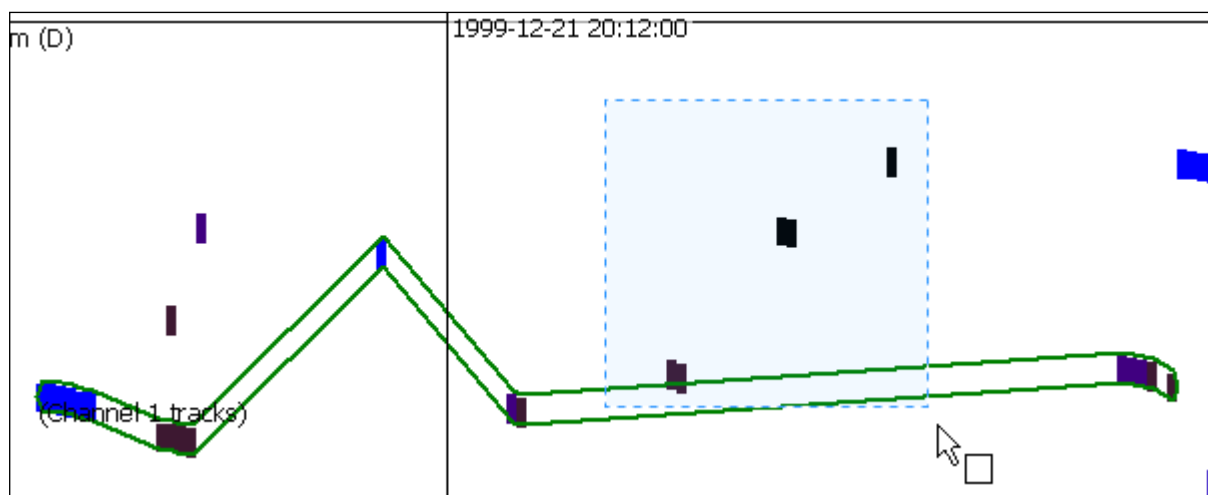


Figure 12. A selection around multiple single targets.

12. On the Shortcut (right-click) menu, click **Create Fish Track From Targets**.

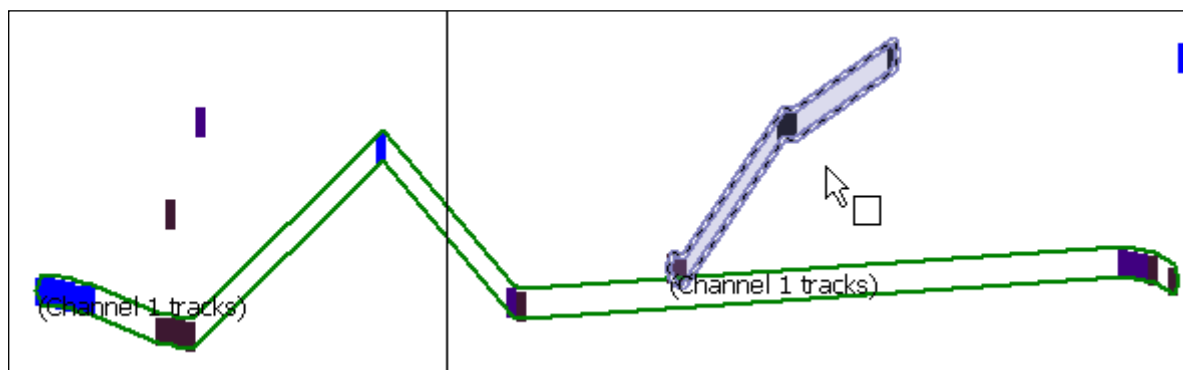


Figure 13. The single target echogram showing the newly created fish track.

13. Find the Region Browser. This can usually be found at the bottom of the Echoview window.
You can change the name, class and type of an existing fish track here, and you can also add notes.

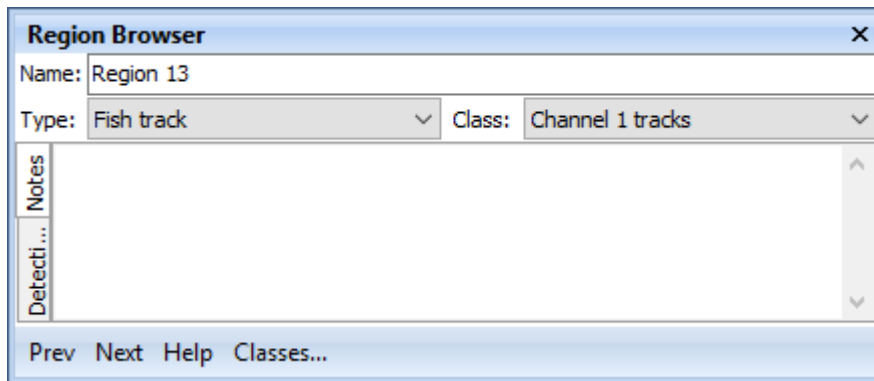


Figure 14 Region Browser.

Topic 4: Examining Fish Tracks

In this topic you will learn about viewing fish tracks in Echoview.

In addition to displaying fish tracks on an echogram, Echoview provides the following ways to explore fish tracks:

Display option	Description
TS frequency distribution graph	A bar chart that displays the percentage of targets in a fish track region or selection that fall within defined target strength range bins
TS vs depth graph	A scatter plot of the target strength against depth for targets in a fish track region or selection
Angles graph	A scatter plot of the minor-axis angle vs. the major-axis angle for each single target in a fish track region or selection
2D projections graphs	Four plots of the angle, range and time of the single targets in a fish track or a selection – useful for examining key features of a fish track quickly
3D graph	3D plot of the single targets in a single fish track or in a selection. Note: 3D graphs are useful for verifying fish tracks, especially when they are close together, cross one another, or are taken from data collected with fixed transducer installations.
3D fish track	3D object created from the single targets of a fish track. 3D fish tracks can be used within scenes
3D single target	3D objects created from the single targets in a selection or an entire echogram. 3D single targets can also be used within scenes

Examining fish tracks

You will now complete three exercises that demonstrate how to examine fish tracks using 2D projections, the 3D Single Targets graph and 3D fish tracks within a scene.

Viewing 2D projections of fish tracks

In this exercise you will view 2D projections of the single targets in a selection of fish tracks.

1. Make a selection that includes two fish tracks.
2. On the **Shortcut** (right-click) menu, point to **Graph Selection**, and then click **2D Projections**. The 2D Projections graphs are displayed.

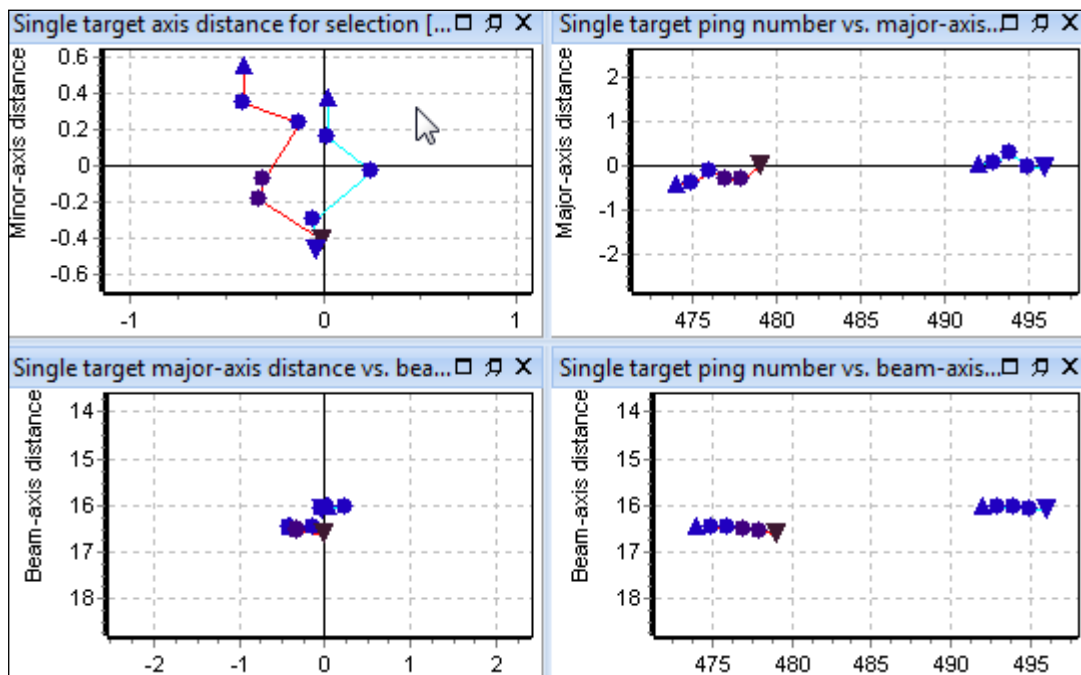


Figure 15. Selection for two fish tracks and the Single Targets 2D Projections graphs.

3. Click a graph and press **F1**. A help page that describes the graphs is displayed. Take a moment to read the help page and close it when you are done.
4. Make another fish track selection either by clicking a fish track or making a new rectangular selection. The Linked 2D Projections graphs are updated for the new selection.
5. Close the 2D projections graphs.

Viewing fish tracks in the 3D Single Targets graph

In this exercise you will view a fish track in the 3D single targets graph window.

6. Click on a fish track. The region border around the fish track thickens and becomes animated.
7. On the **Shortcut** (right-click) menu, point to **Graph Region**, and then click **3D Single Targets**. The 3D single targets graph is displayed.

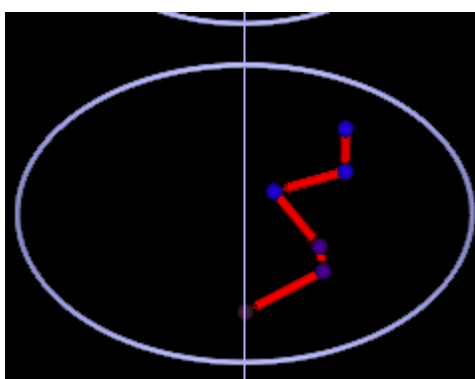


Figure 16. The 3D Single Targets graph.

8. Click the 3D Single Targets graph and press **F1**. A help page describing the 3D single targets graph is displayed. Take a moment to read about the 3D single targets graph.
9. Click the link to the "3D Navigation" topic. This is near the bottom of the page. Read about the different navigation modes and practice navigating in the 3D environment.
10. When you are done, close the help file, and the 3D single targets graph.

Create and view 3D fish tracks in scenes

In this exercise you will create and view 3D fish tracks in the scene window.

11. On the **Echogram** menu, point to **Create 3D Object**, and then click **Fish Tracks**. A dialog is now displayed describing the created object.
12. Press **OK**
13. Open the **Dataflow** window (shortcut **F7**), display the **Shortcut** menu (right-click), point to **New**, and then click **Scene**. The Scene Properties dialog is now displayed.
14. Click the **Objects** page
15. Select the check box of the object named **3D Fish track group 1**.
16. Press **OK**. A scene object called **Scene1** is now available in the Dataflow window. Double-click it to view the scene containing the 3D fish tracks. To learn more about the scene window, press F1 to display the help file.
17. To change the sphere and arrow size of 3D fish tracks, move the mouse above a 3D fish track, display the **Shortcut** menu (right-click), and click **Group Properties**. The 3D Object Properties dialog box is now displayed.
18. Click the Display page.
19. In the **Track point radius** box, type: 0.05
20. In the **Track arrow radius** box, also type: 0.05
21. Press **OK**
22. Experiment with the scene window and the 3D fish tracks. Creating and adding 3D single targets to a scene is very similar. See the help file for further information on 3D fish tracks and 3D single targets.
23. Close the help file and the scene window.

Topic 5: Analyzing Fish Tracks

Echoview provides two ways of generating analyses of fish tracks.

Method	Description
On-screen analysis	Displays analysis results for a single fish track. Select the Linked setting on the Results dialog box to show results for subsequently-selected fish tracks.
Export analysis	Exports analysis results for all fish tracks (or a selected class of fish track). The data are exported to comma-separated value (*.csv) files and can be opened in most spreadsheet applications. Some exports can also be formatted for use with database applications.

An on-screen analysis of a fish track

In this exercise you will generate an on-screen analysis of a fish track.

1. On the single target echogram, click on a fish track region. The region border around the fish track thickens and animates.
2. On the **Shortcut** (right-click) menu, click **Analyze Fish Track**. The Fish Track Analysis Results dialog box is displayed. For a description of the analysis variables that are displayed, press the **Help** button to open the help file.

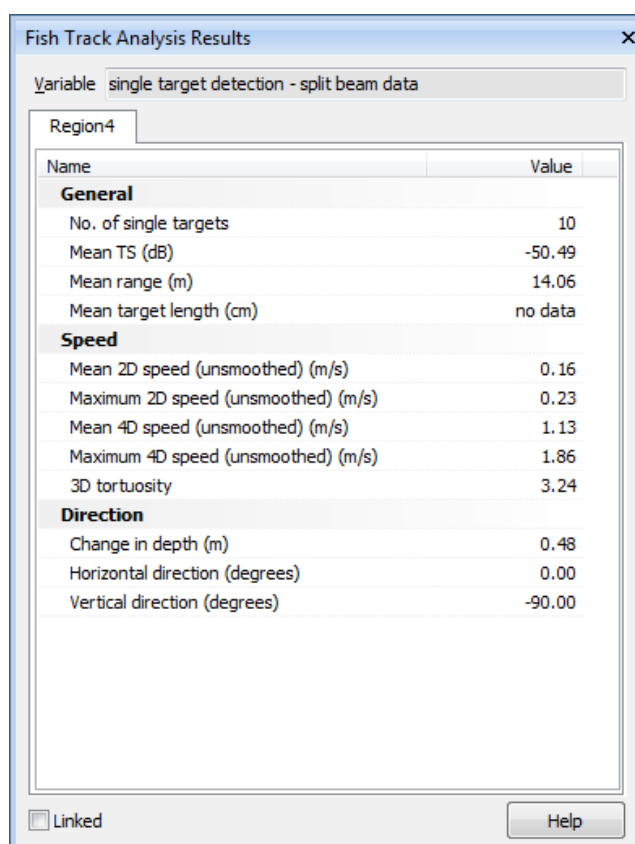


Figure 17. Fish Track Analysis Results dialog box

3. Close the help file and the Fish Track Analysis Results dialog box.

Exporting fish track analysis results

In this exercise you will export an analysis of fish tracks. You will complete this exercise in the following stages:

- selecting the analysis variables to export
- selecting the fish tracks to analyze and exporting the analysis
- viewing the exported file.

Note: You will export fish tracks by cells in this exercise. Exporting fish tracks by regions and by region-cell intersections is very similar and is covered in the help file.

Selecting the analysis variables to export

Before you export an analysis of fish tracks, you must select the analysis variables you want to export. A list of the available analysis variables is provided in the help file on the About Analysis Variables page in the Single target and fish track analysis variables section.

4. On the View menu, click **EV File Properties**. The EV File Properties dialog box is displayed.
5. Click the Export page.

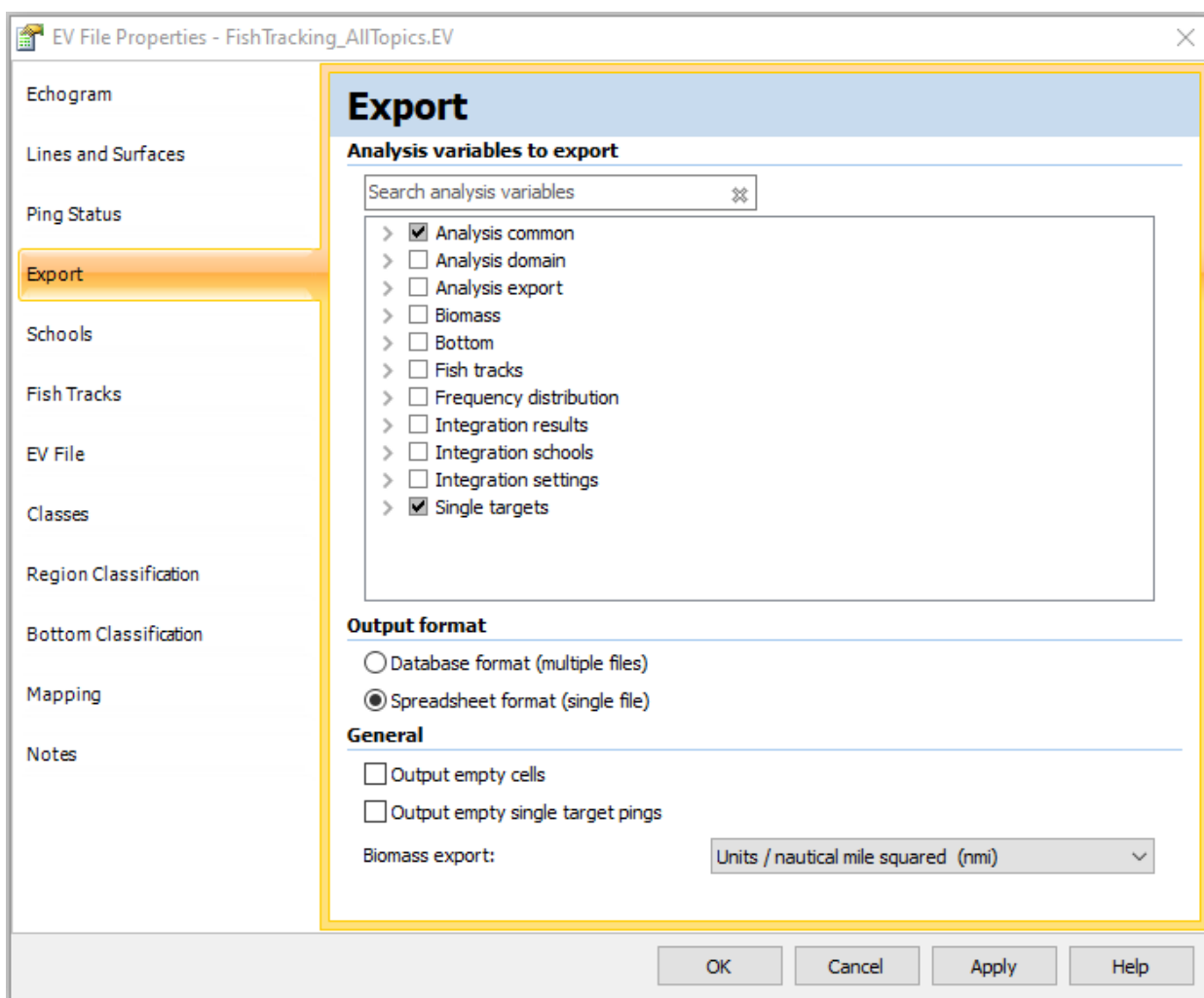


Figure 18. Export page of the EV File Properties dialog box.

6. Closely related export variables are grouped. Click the symbol next to a group title to expand the group to its individual variables. You will do this for the single target analysis variables for the fish tracks that you viewed.
7. Select Num_targets, TS_mean, TS_max, TS_min, Target_range_mean, Target_range_max and Target_range_min from the Single targets group. **Note:** You can also select common (i.e. non-fish tracking specific) analysis variables from the list and they will be included in the export file.

8. Select the Spreadsheet format (single file) option.
9. Click **OK**.

Selecting the fish tracks to analyze and exporting the analysis

You will now select which fish tracks to analyze and export the analysis results.

10. Select the single target detection echogram. On the **Echogram** menu, point to **Export**, point to **Analysis by Cells**, and then click **Fish Tracks**. The Export Fish Tracks Regions by Cells, Select Classes dialog box is displayed.

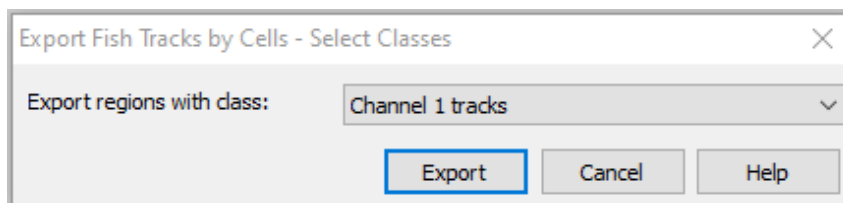


Figure 19. Export Fish Track Regions by cells dialog box.

11. In the **Export regions with class** list, choose Channel 1 tracks. This limits the export to fish tracks of a single class.
12. Click **Export**. The Export Fish Tracks by Cells dialog box is displayed.
13. Save the export file using a name and folder of your choosing.

Tips

- Calibration settings for analysis exports are specific to each variable, and are not included in export data.
- Data management tips:

To ensure that you have a permanent record of the calibration settings at the time of your export, create a read-only folder to store your export data.

For each export, save a copy of the EV file to the folder path of the export.

- You can save time by specifying a user-defined keyboard shortcut for the **Create Fish Tracks from Targets** feature, as well as many other fish track editing actions. For more information refer the Echoview Help file page “User-defined keyboard shortcuts”.

Viewing exported fish track analyses

In this exercise you will open the fish track analysis export file and review its contents.

14. Start Microsoft Excel (or another spreadsheet application that can read .csv files).
15. Open the file you created in the spreadsheet application.
16. Take a moment to review the contents of the export file.

Note: The export file contains a row for each fish track. Each row contains values that identify the fish track, identify the cell in which the fish track ends and provide the results for the selected analysis variables.

For a description of each analysis variables, refer to the Echoview Help file page “About Analysis Variables”.

	A	B	C	D	E	F	G	H	I	J	K	L	M	N	O	P	Q
1	Region_ID	Region_name	Region_class	Process_ID	Interval	Layer	Ping_S	Ping_E	Date_M	Time_M	Num_targets	TS_mean	TS_max	TS_min	Target_range_mean	Target_range_max	Target_range_min
2	1	"Region1"	"Channel 1 tracks"	50	7881726	2	382	385	19991221	20:11:47.5660	3	-55.634793	-55.084788	-56.699155	15.93065	15.942091	15.90777
3	2	"Region2"	"Channel 1 tracks"	50	7881726	2	402	408	19991221	20:11:51.9660	7	-55.384631	-54.125178	-56.839941	15.692038	15.770486	15.633202
4	4	"Region4"	"Channel 1 tracks"	50	7881726	1	431	433	19991221	20:11:57.3670	3	-61.940334	-60.733965	-63.649379	6.938556	6.967157	6.915675
5	5	"Region5"	"Channel 1 tracks"	50	7881727	2	474	479	19991221	20:12:06.1670	6	-57.811993	-55.908874	-61.772073	16.519827	16.594189	16.456905
6	6	"Region6"	"Channel 1 tracks"	50	7881727	2	492	496	19991221	20:12:09.7670	5	-52.767148	-52.622567	-52.871033	16.065646	16.113695	16.027893
7	7	"Region7"	"Channel 1 tracks"	50	7881727	1	505	507	19991221	20:12:12.1660	3	-51.915093	-51.560992	-52.205269	6.801272	6.829873	6.778392
8	8	"Region8"	"Channel 1 tracks"	50	7881727	2	405	518	19991221	20:12:03.1660	18	-52.427981	-48.046337	-63.938197	13.831351	14.329005	12.321228
9	9	"Region9"	"Channel 1 tracks"	50	7881727	2	468	490	19991221	20:12:06.7660	5	-65.519046	-63.736231	-67.021422	12.554611	13.642586	11.343081

Figure 20. ExportFishTracks.csv file opened in Microsoft Excel.

17. Close the spreadsheet application.



You should close `FishTracking_AllTopics.EV` file. If you wish to save the changes, it is recommended that you save the file with a different name so you can repeat this topic at a future date if required.

18. On the **File** menu, click **Save As**.
19. Select the folder in which the tutorial data have been saved.
20. In the **Filename** box, enter a name for the EV file.
21. Click **Save**.
22. On the **File** menu, click **Close**.

If you are going to complete another tutorial, or practice what you learned in this tutorial, you should leave Echoview running, otherwise close Echoview.