

Echoview 16.1 release notes

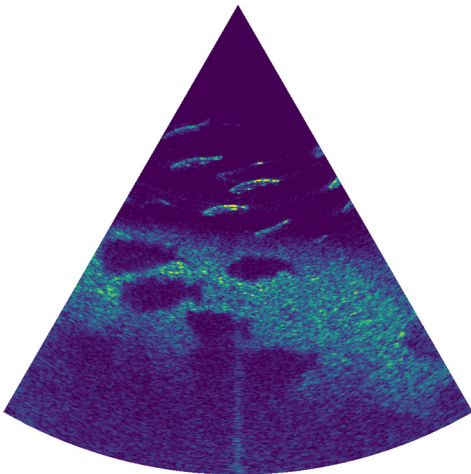


Echoview 16.1 is a free upgrade for anyone with licensed access to Echoview 16, providing practical, user-requested enhancements. From expanded file format support to workflow and usability improvements, this release is designed to make everyday processing more efficient and more flexible.

Please contact info@echoview.com to discuss your options for accessing Echoview 16.1.

Support for Blueprint Subsea Oculus V2 format data files

Echoview 16.1 introduces support for Oculus data files recorded by version 2 of Blueprint Subsea's ViewPoint software, removing the need to first convert data to the legacy version 1 format. Additional metadata is also read from these files and reported as calibration values, including gamma control, beam control, gain control, gain assist, gain boost, and pressure sensor values.



Oculus imaging sonar data kindly shared by Blueprint Subsea.

Support for new AZFP file format from ASL Environmental Sciences

ASL Environmental Sciences has developed new instrumentation to replace earlier models of the AZFP. The sixth-generation instruments now have the capability of being configured as an Acoustic Zooplankton Fish Profiler (AZFP6), Ice Profiling Sonar (IPS6) or Shallow Water Ice Profiler (SWIP6). Their *.aps6 files are supported in Echoview 16.1, and now include embedded metadata that, for earlier-generation systems, was stored in separate files.

Other features

- Exporters for cell-based analysis domains now include an option to specify a custom grid, rather than using the grid settings of the input acoustic variable.
- When scripting, you can now add optional operands using SetOperand for operators and exporters that have this ability (e.g. Formula and Code operators, and exporters such as Measurements - ICES SONAR-netCDF4 and Measurements - EVD), which is particularly useful when creating these as new objects via COM.
- The minimum acceptable value for TransmittedPower (and TransmittedPowerLogging) has been reduced from 10 W to 0.1 W to better support systems such as the Kongsberg (Simrad) ME70 and MS70, which can record data at lower power levels.
- The Resample by Time Interval operator allows a maximum time interval of 86,400 seconds (24 hours), increased from the previous maximum allowable time interval of 3,600 seconds (1 hour).
- The interface is more responsive when working with time series.
- WMTS maps include attribution information.
- Multiple Object Properties now supports Auto Display Limits, Lower Display Limit, and Upper Display Limit.
- Calibration Assistant performance has been improved during live viewing.
- Minor updates to single beam data exports to the ICES SONAR-netCDF4 format.
- The export file extension for unspecified time series has changed from *.custom.csv to *.timeseries.csv.

Getting Echoview 16.1

You can download Echoview 16.1 from our [website](https://www.echoview.com), or use the Help menu in the software to Check for Updates.

Echoview 16.1 is compatible with 64-bit Windows 10 and 11 operating systems.

A complete list of features and fixes is available on the "New in Echoview 16" page in the Help file installed alongside Echoview 16.1.

Please contact support@echoview.com for further information.